

WIRELESS RANKEN SETUP – WINDOWS 7/8

Open the **“Control Panel”** and go to the **“Network and Sharing Center”**

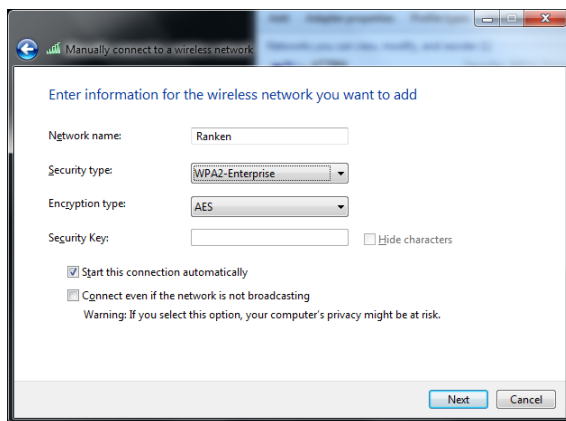
Select **“Manage wireless networks”** from the left column of the window

Windows 8 users select **“Set up a new connection or network”** then select **“Manually connect to a wireless network”**

Click **“Add”** and then select **“Manually create a network profile”**

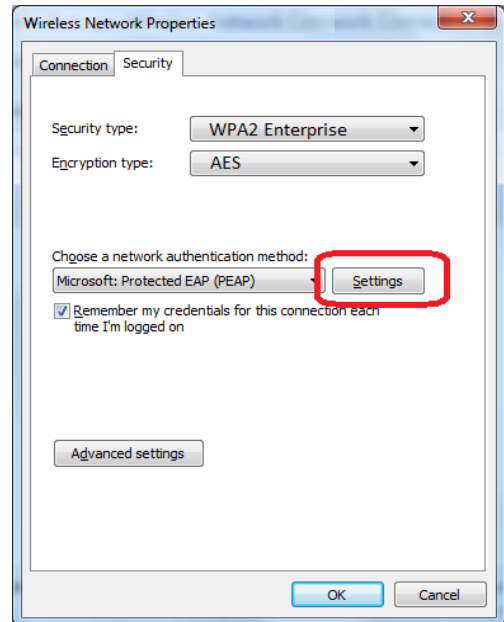
Input this information in the new window:

Network Name: Ranken
Security Type: WPA2-Enterprise
Encryption Key: AES
Select Next



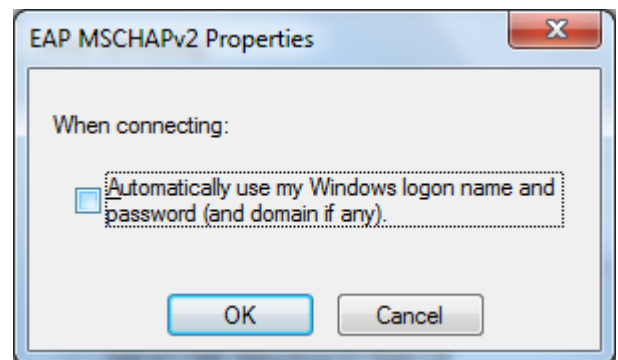
Select **“Change connection settings”**

Select the **“Security”** tab and click **“Settings”** next to where it says **“Choose a network authentication method”**



Uncheck **“Validate server certificate”**

Click **“Configure”** next to where it says **“Select Authentication Method”** and uncheck **“Automatically use my windows logon name and password”**



Click **OK** twice

Select **“Advanced settings”** from the **“Wireless Network Properties”** window

Checkmark **“Specify authentication mode”** and select **“User Authentication”** from the drop-down list

Click **OK** twice

Close the **“Manually connect to a wireless network”** window if it is still

If you have properly setup the connection, you will be prompted after a couple of moments to input your

username and password. Type in your username (ex. John_Smith) and password and then select **OK**

[Type here]