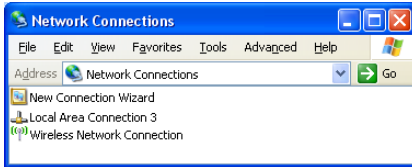


WIRELESS RANKEN SETUP – WINDOWS XP

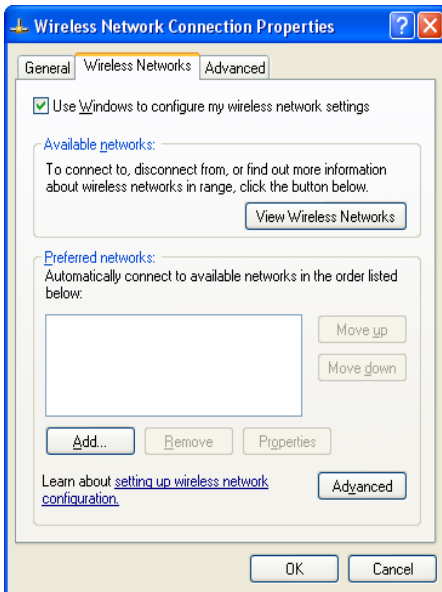
Open the “Control Panel” and go to “Network Connections”

Right-click the “Wireless Network Connection” and select “Properties”



Select “Wireless Networks” tab

Select the “Add” button

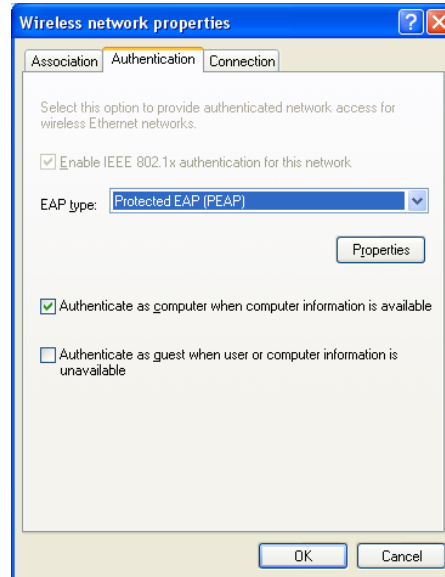


Type in the information so it matches

1. Network Name: Ranken
2. Network Authentication: WPA2
3. Data Encryption: AES

Select the “Authentication” tab

1. EAP Type: Protected EAP (PEAP)



Select the “Properties” button from the “Authentication” tab

1. Authentication Method: EAP-MSCHAP v2
2. Select “Configure” button
3. Uncheck “Automatically use my windows login name and password”
4. Select OK on all the remain boxes that are still open

